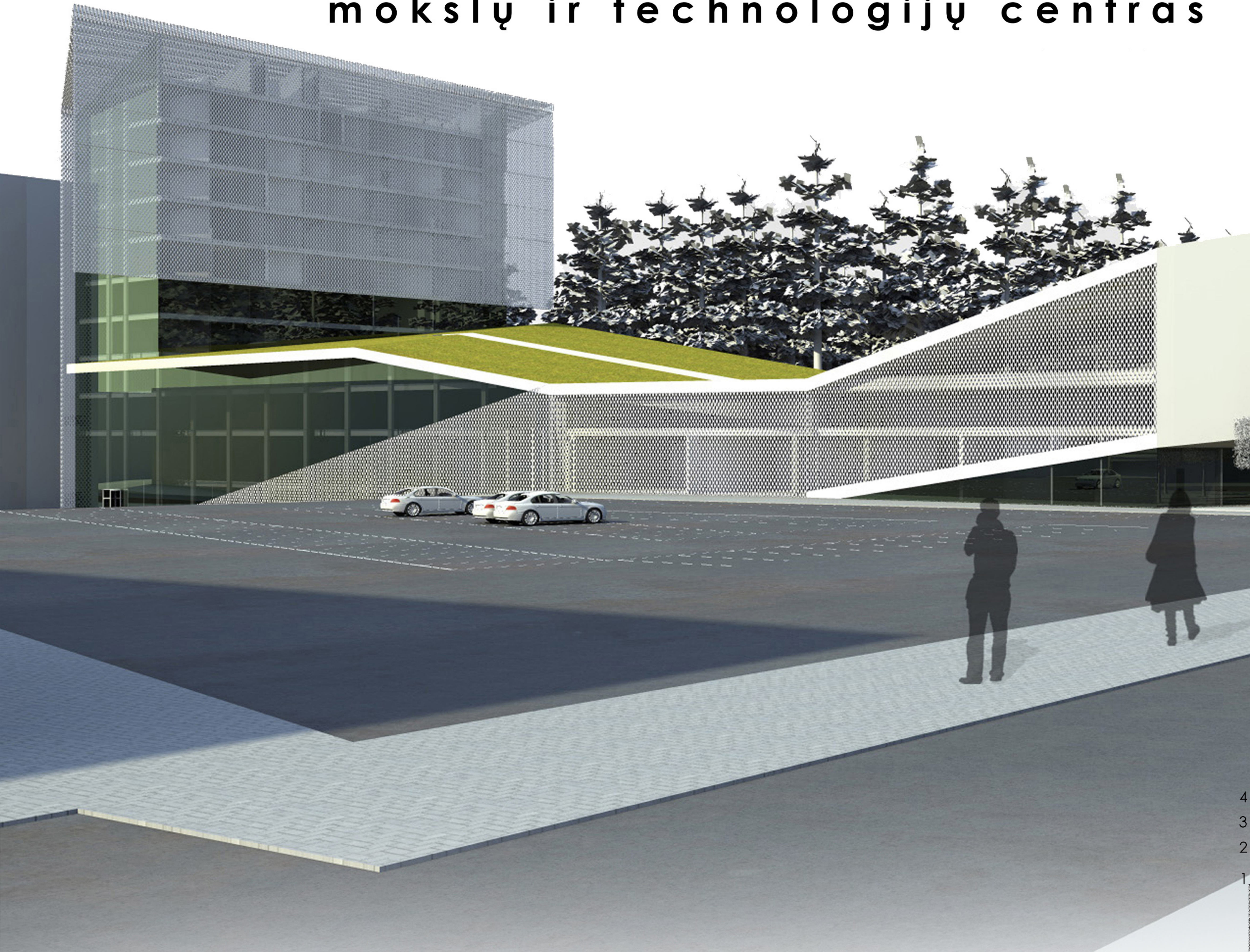
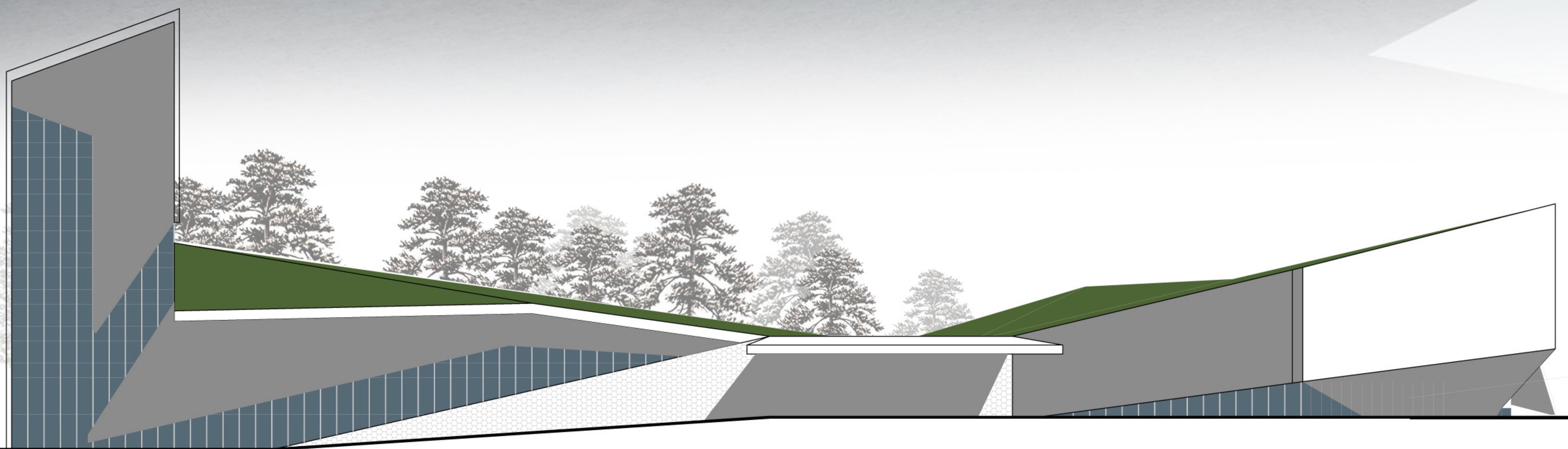


000AAA

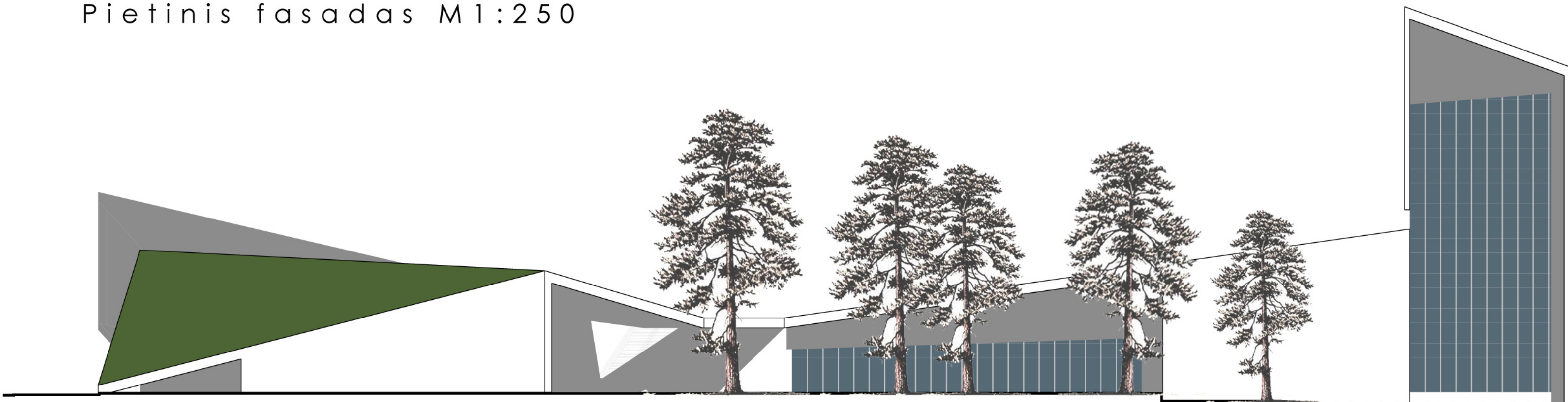
# Nacionalinis fizinių mokslų ir technologijų centras



4  
3  
2  
1

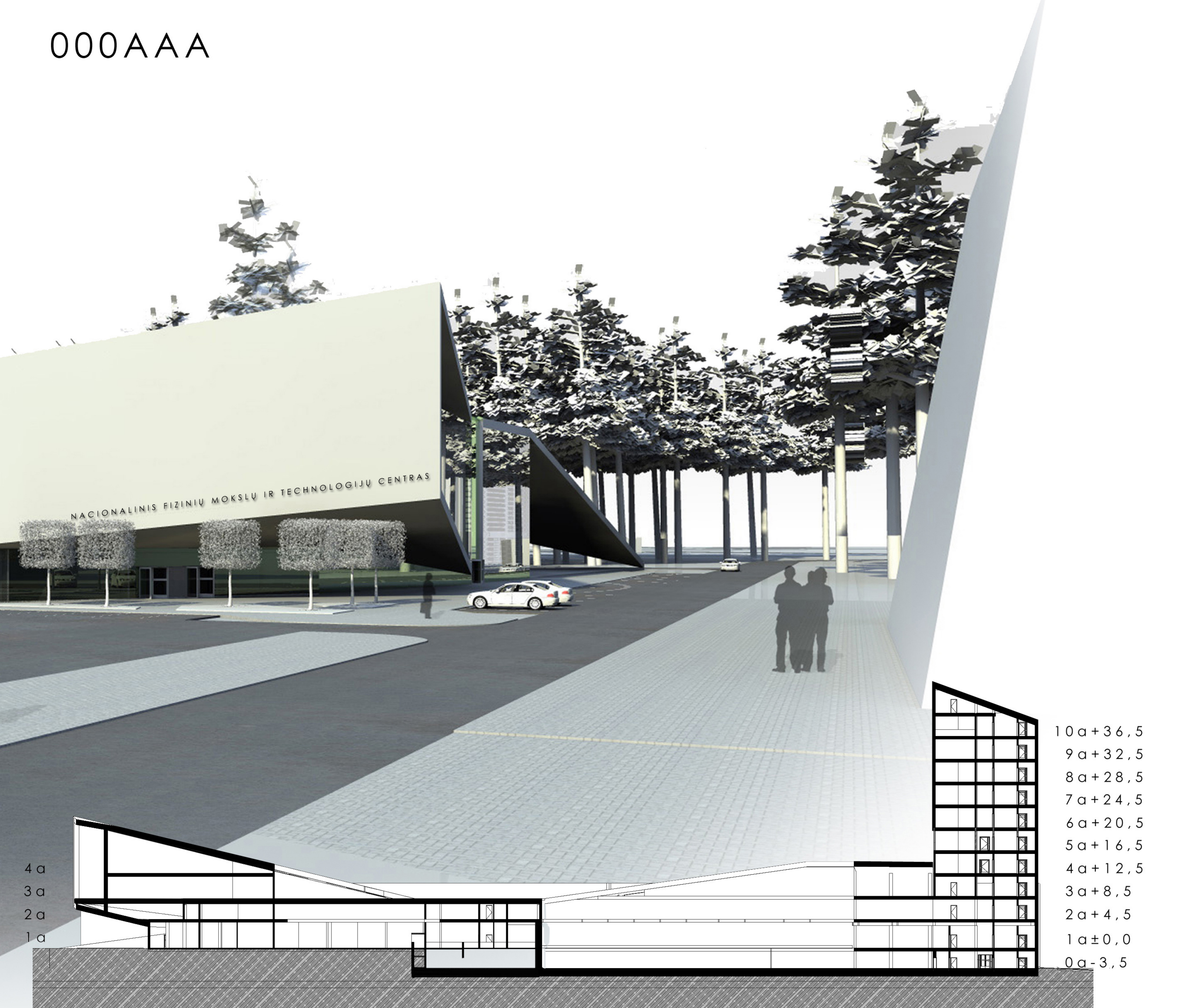


Pietinis fasadas M1:250

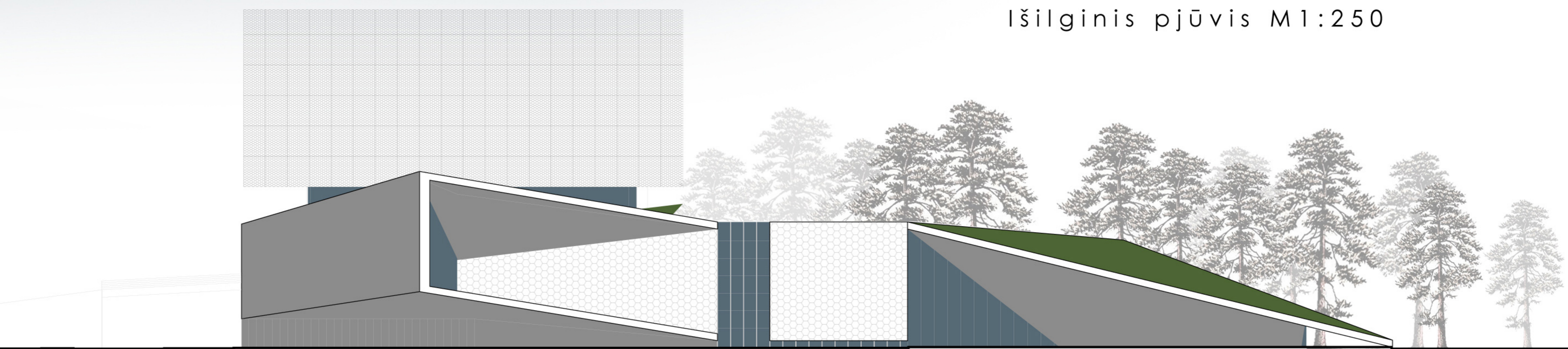


Šiaurinis fasadas M1:250

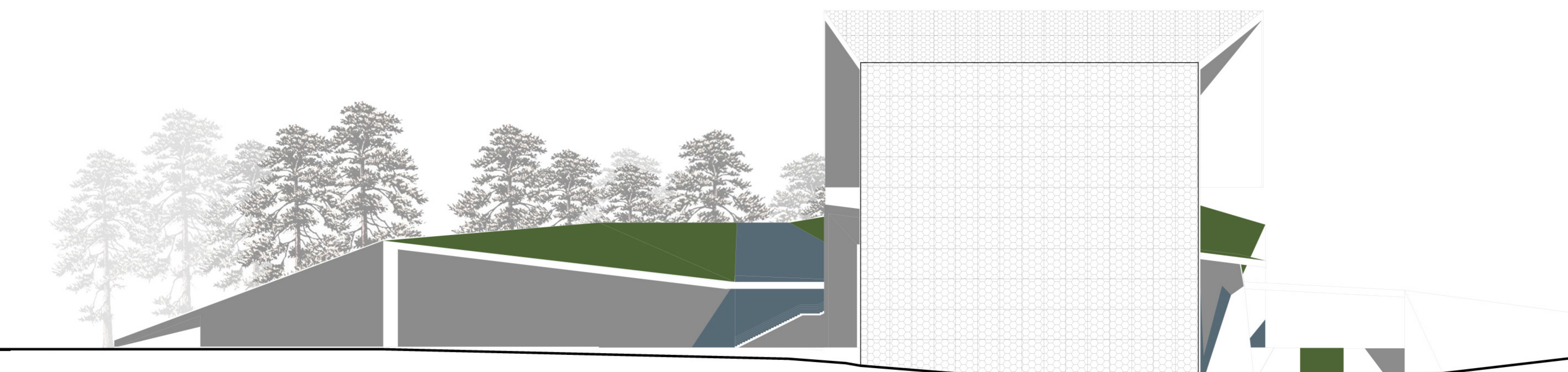
000AAA



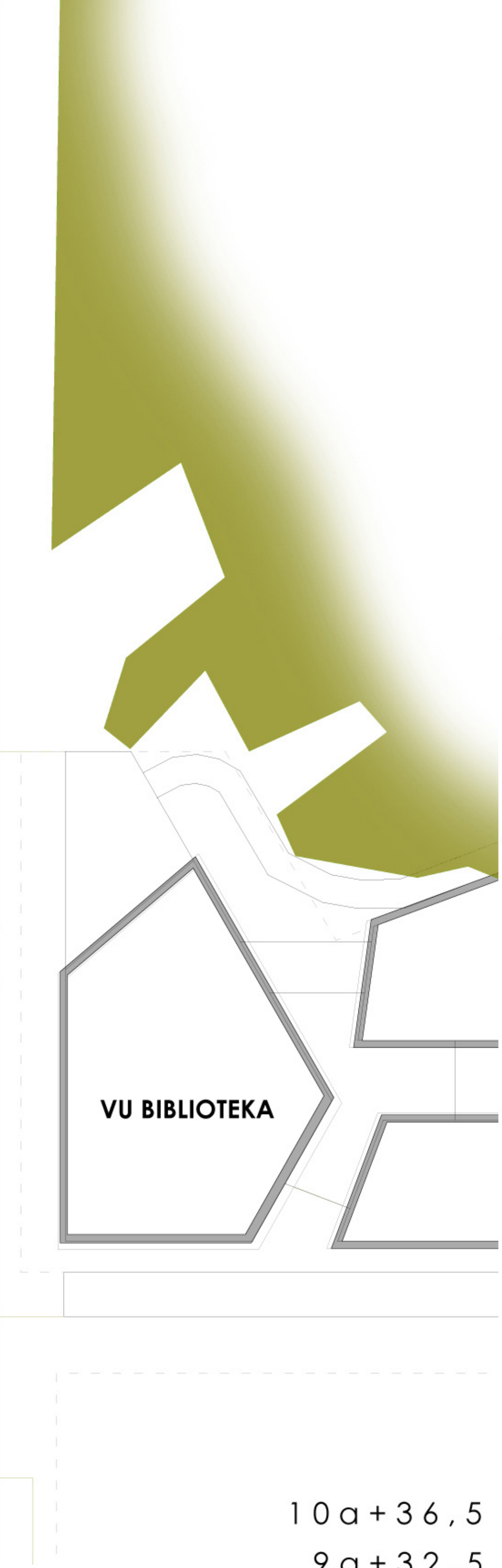
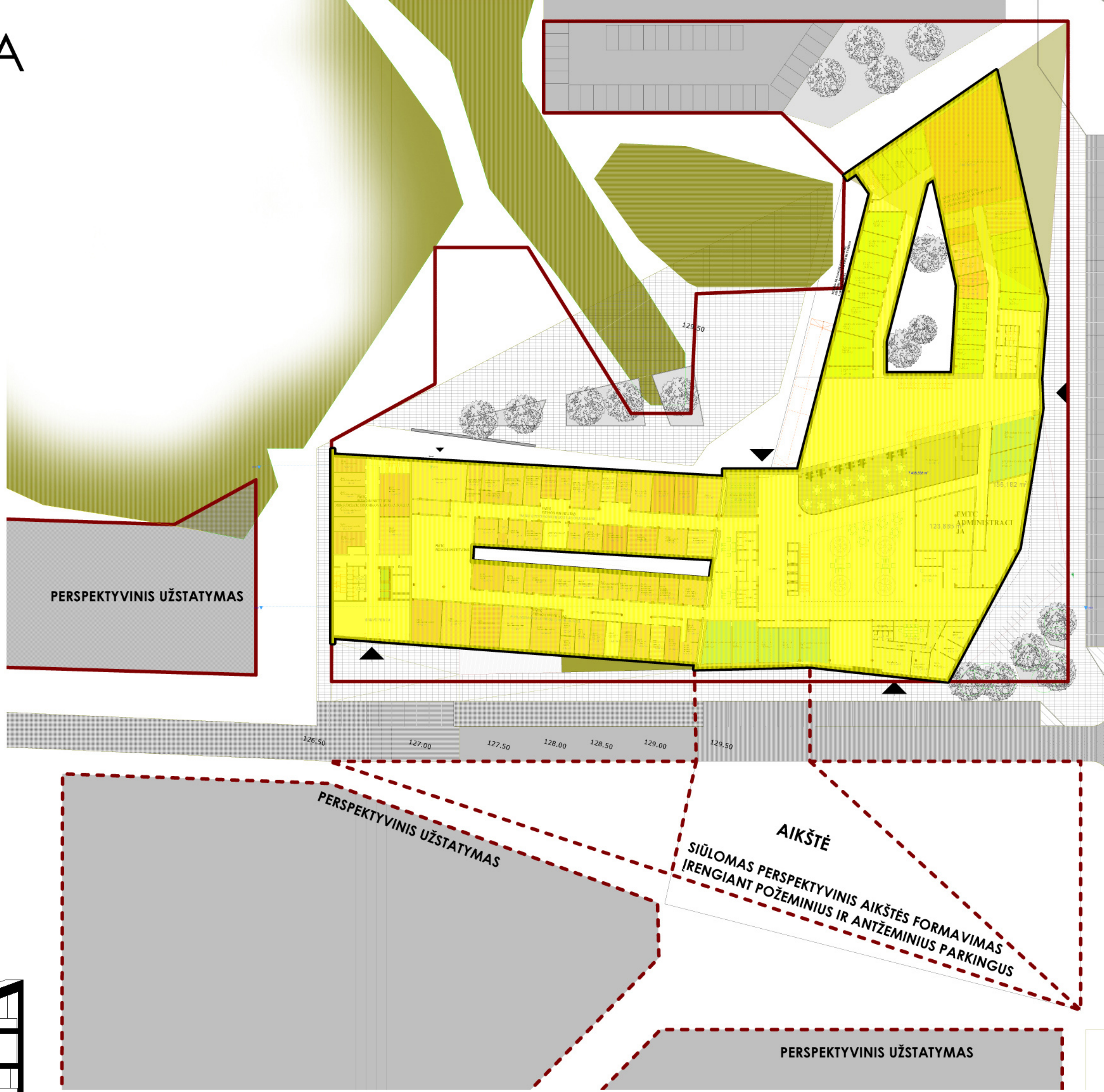
Išilginis pjūvis M1:250



Rytinis Fasadas M1:250

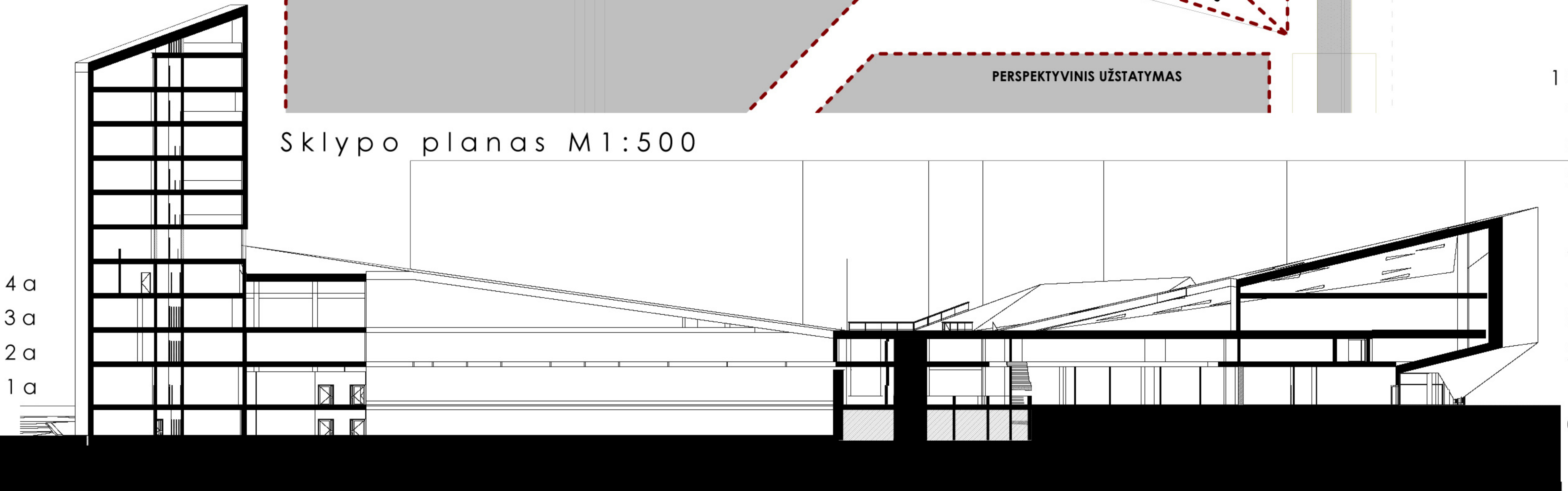


Vakarinis fasadas M1:250



Sklypo planas M1:500

- 10a+36,5
- 9a+32,5
- 8a+28,5
- 7a+24,5
- 6a+20,5
- 5a+16,5
- 4a+12,5
- 3a+8,5
- 2a+4,5
- 1a±0,0
- 0a-3,5

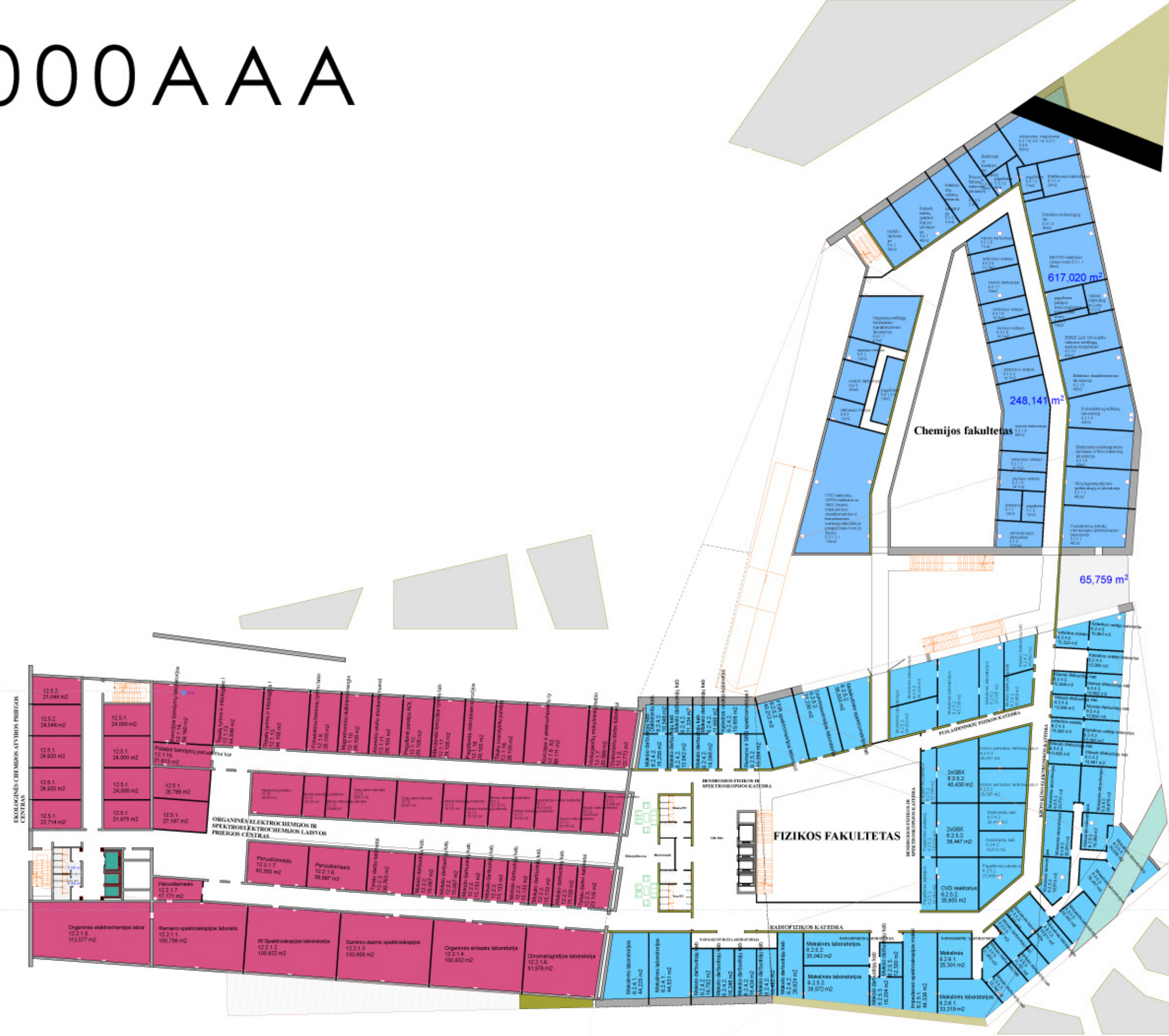


Išilginis pjūvis M1:250

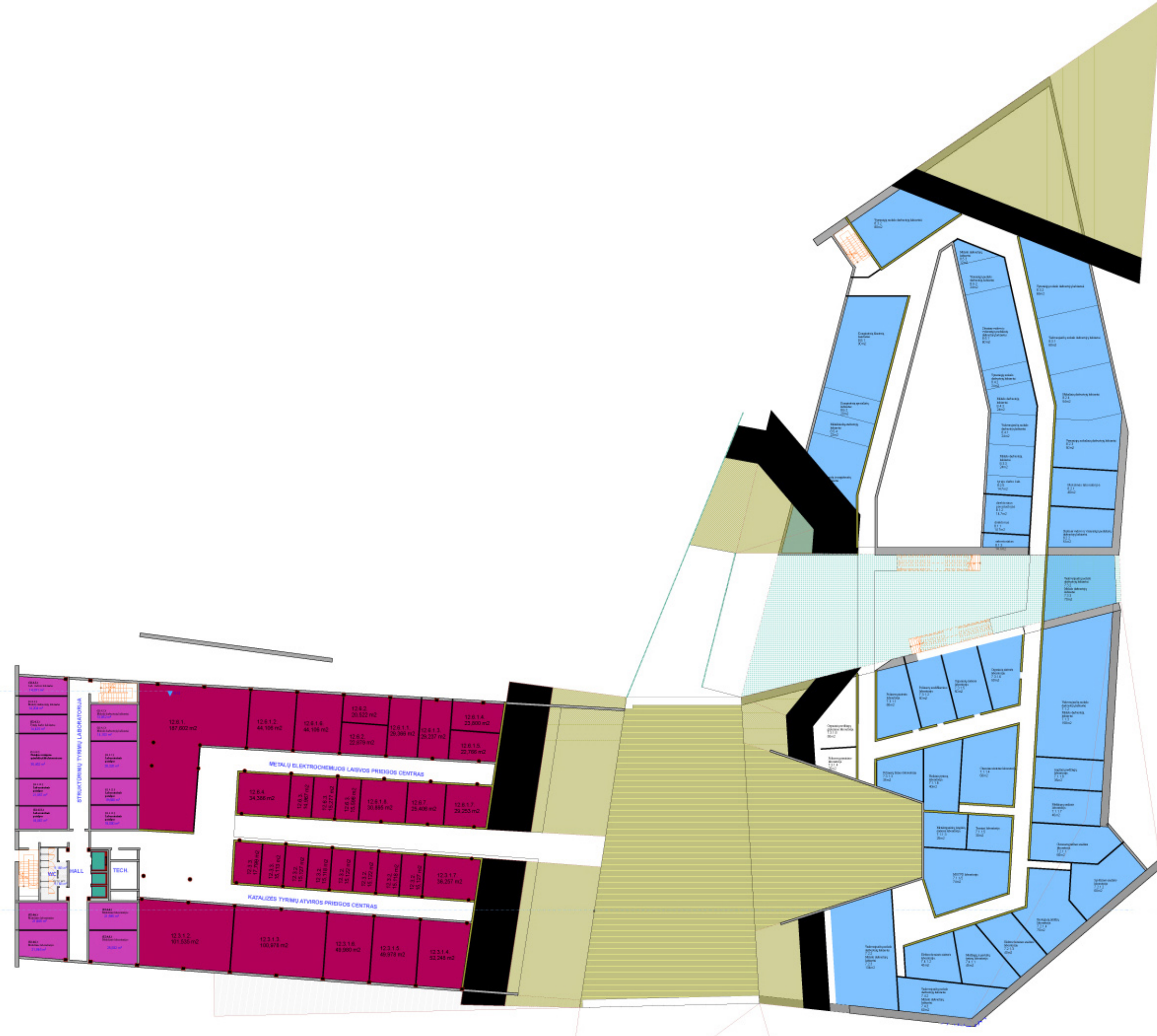


Pastato Vizualizacija

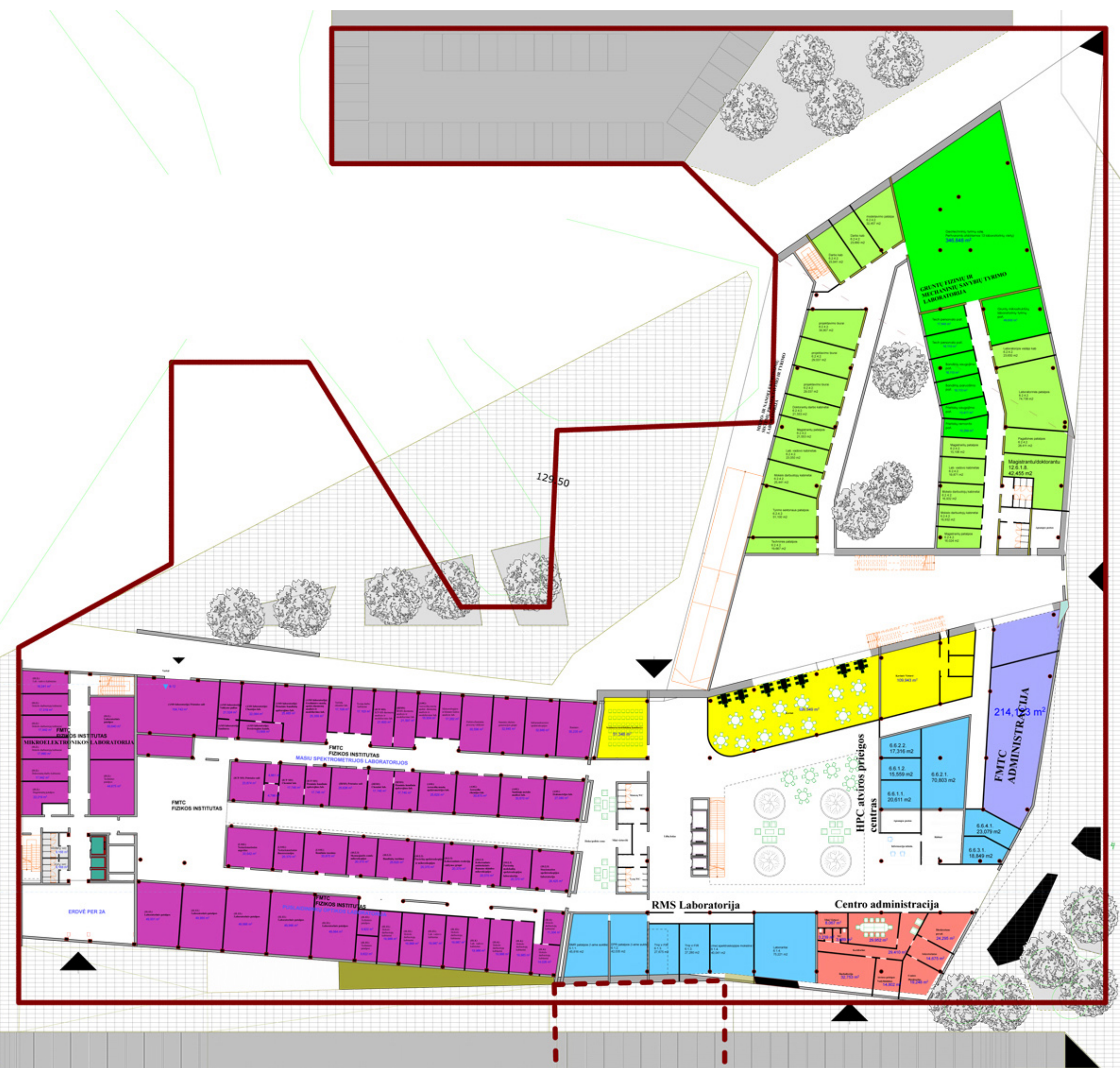
000AAA



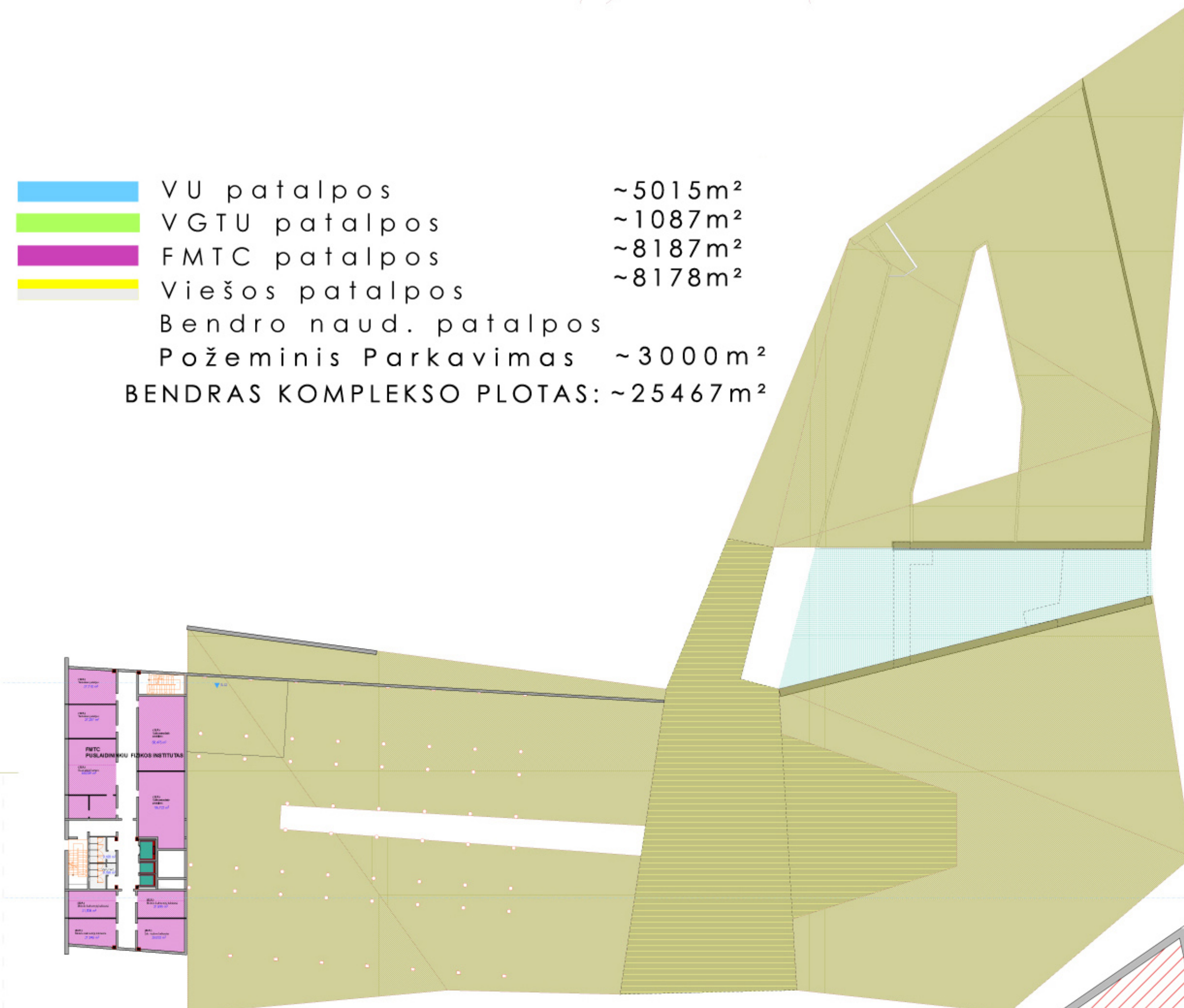
Antro aukšto planas M1:500



Trečio aukšto planas M1:500



Pirmo aukšto planas M1:500

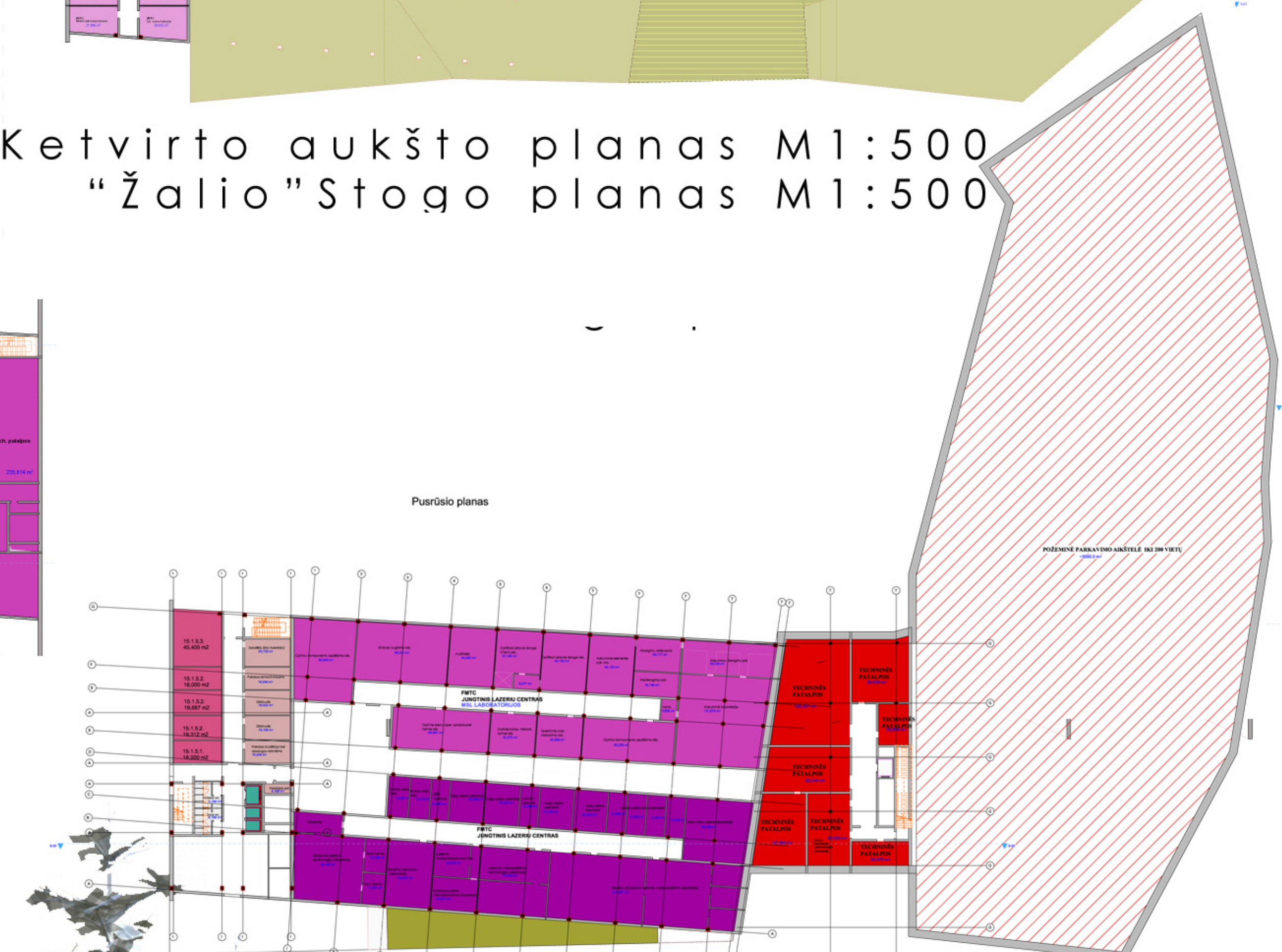


Ketvirto aukšto planas M1:500  
"Žalio" Stogo planas M1:500

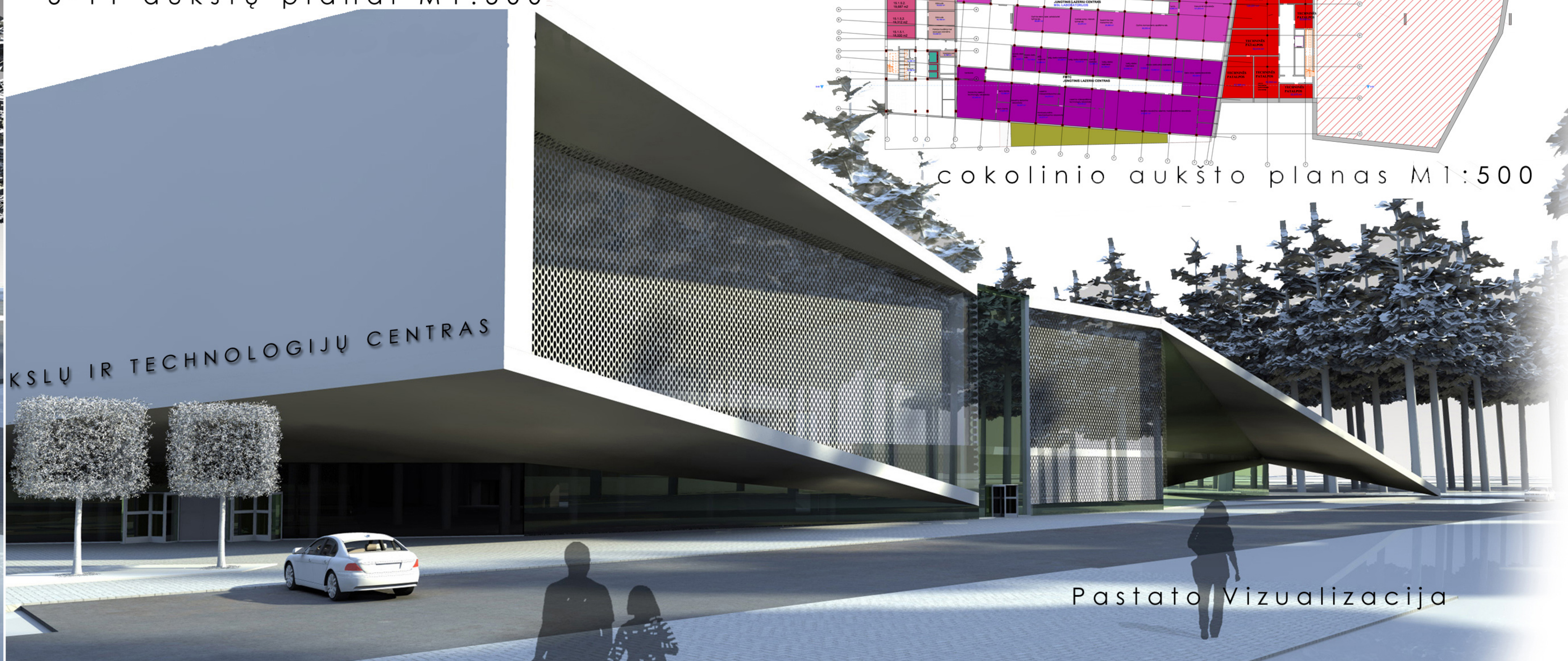
- VU patalpos ~5015m<sup>2</sup>
- VGTU patalpos ~1087m<sup>2</sup>
- FMC patalpos ~8187m<sup>2</sup>
- Viešos patalpos ~8178m<sup>2</sup>
- Bendro naud. patalpos
- Požeminis Parkavimas ~3000m<sup>2</sup>
- BENDRAS KOMPLEKSO PLOTAS: ~25467m<sup>2</sup>**



5-11 aukštų planai M1:500



Gokolinio aukšto planas M1:500



Pastato Vizualizacija